



## PN16 Insulating Joints for service lines

### Technical Specifications

- Manufactured and tested: UNI-CIG 10284
- Max operating pressure: 16 bar
- Test pressure: 18 bar
- Max operating temperature: 70°C
- Insulation resistance in air at 1000V DC: > 5Mohm
- Electrical test strength: 3000 V

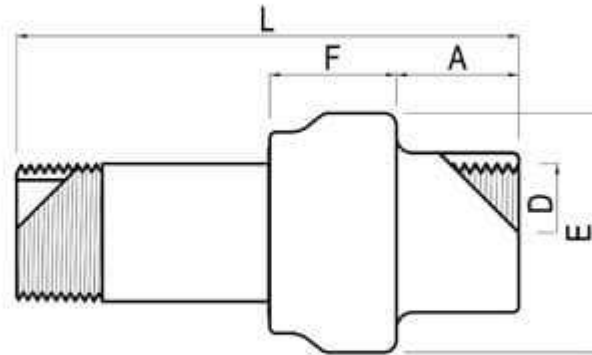
### Materials

- Barrels/Pipes: Steel UNI 7088/API 5L
- Cups: Forged A105
- Insulating rings: Polycarbonate
- Gaskets: NBR
- Ends: ISO7 - API 5L
- Coatings: Epoxy coatings

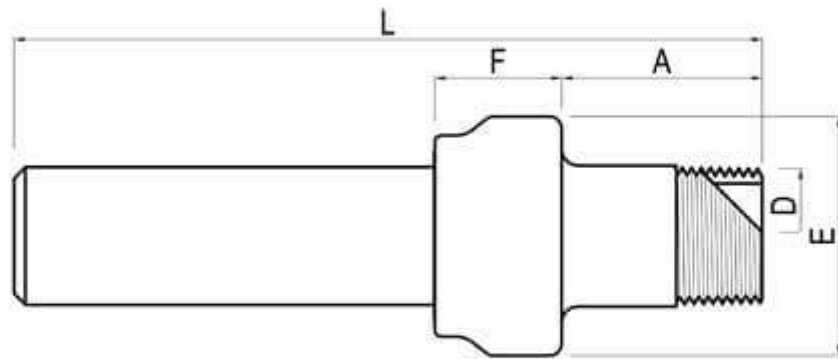
### The PN16 Dielectric Joint Range

The PN16 insulating joints for service lines are usually available for prompt delivery. They are manufactured in diameters from 3/4" to 4" with different connection ends (threaded and/or weldable), which allows for any type of insertion into pipelines.

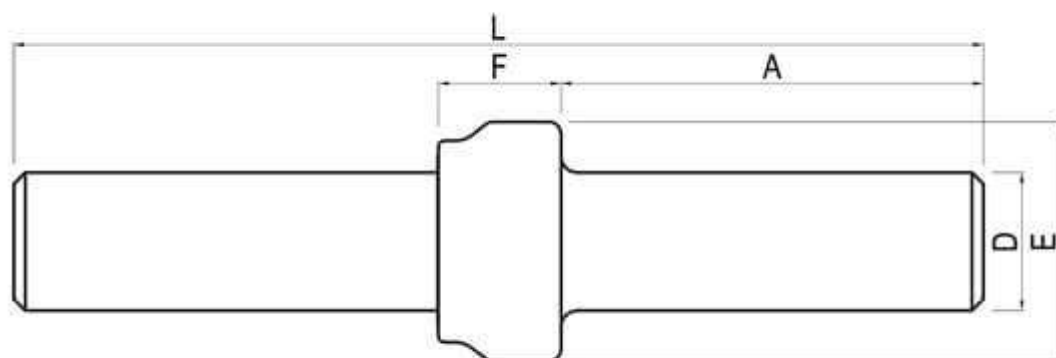
\* The dimensions expressed in mm are for informational purposes only and are subject to change.



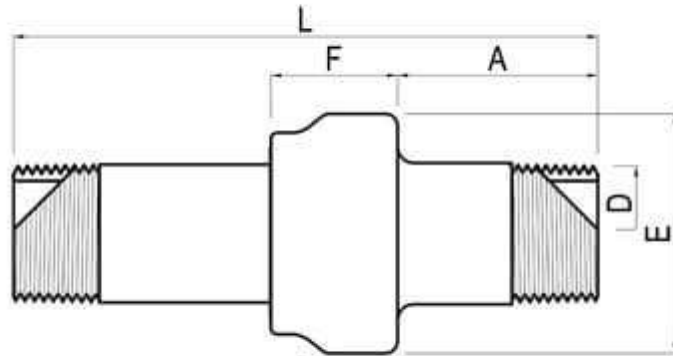
<b>DN</b>	<b>D</b>	<b>A</b>	<b>F</b>	<b>E</b>	<b>L</b>	<b>Kg</b>
3/4"	26,7	27	31	52	110	0,5
1"	33,4	30	31	58	123	0,7
1" 1/4	42,2	32	33	70	135	1,0
1" 1/2	48,3	32	36	75	145	1,2
2"	60,3	36	39	90	150	1,7
2" 1/2	76,1	40	54	114	171	3,0
3"	88,9	44	65	127	200	4,0
4"	114,3	55	65	152	220	6,5



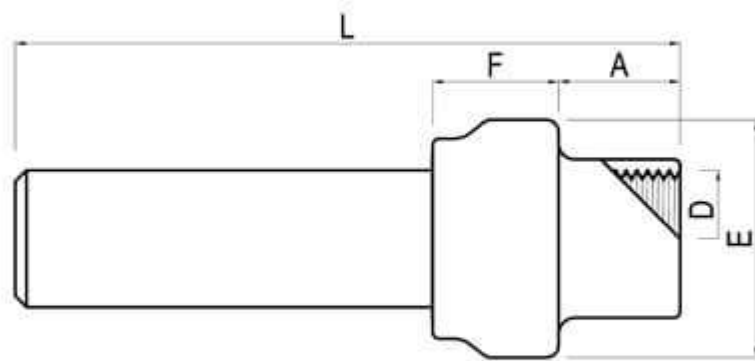
<b>DN</b>	<b>D</b>	<b>A</b>	<b>F</b>	<b>E</b>	<b>L</b>	<b>Kg</b>
3/4"	26,7	41	31	52	167	0,6
1"	33,4	50	31	58	184	0,8
1" 1/4	42,2	51	34	70	194	1,3
1" 1/2	48,3	56	36	75	211	1,5
2"	60,3	62	39	90	227	1,9
2" 1/2	76,1	63	54	114	256	3,8
3"	88,9	72	65	127	300	5,0
4"	114,3	102	65	156	330	7,5



<b>DN</b>	<b>D</b>	<b>A</b>	<b>F</b>	<b>E</b>	<b>L</b>	<b>Kg</b>
3/4"	26,7	95	31	52	225	0,7
1"	33,4	104	31	58	240	1,0
1" 1/4	42,2	110	34	70	270	1,5
1" 1/2	48,3	119	36	75	280	1,7
2"	60,3	126	39	90	290	2,3
2" 1/2	76,1	139	54	114	330	4,5
3"	88,9	172	65	127	400	6,0
4"	26,7	95	31	52	225	0,7



<b>DN</b>	<b>D</b>	<b>A</b>	<b>F</b>	<b>E</b>	<b>L</b>	<b>Kg</b>
3/4"	26,7	41	31	52	124	1,2
1"	33,4	50	31	58	145	1,4
1" 1/4	42,2	51	33	70	154	1,7
1" 1/2	48,3	56	36	75	169	2,0
2"	60,3	62	39	90	176	3,0
2" 1/2	76,1	63	54	114	192	4,5
3"	88,9	72	65	127	233	6,0
4"	114,3	102	65	152	264	9,0



<b>DN</b>	<b>D</b>	<b>A</b>	<b>F</b>	<b>E</b>	<b>L</b>	<b>Kg</b>
3/4"	26,7	27	31	52	153	1,2
1"	33,4	30	31	58	165	1,4
1" 1/4	42,2	32	33	70	175	1,7
1" 1/2	48,3	32	36	75	187	2,0
2"	60,3	36	39	90	200	3,0
2" 1/2	76,1	40	54	114	233	4,5
3"	88,9	44	65	127	280	6,0
4"	114,3	55	65	152	280	9,0